

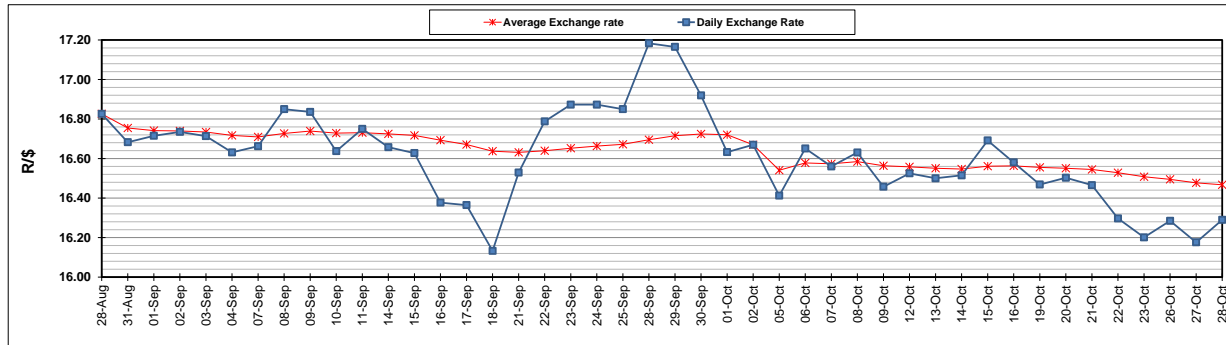
	PETROL 95 ULP	PETROL 93 ULP & LRP	DIESEL 0.05%	DIESEL 0.005%	ILL. PAR.
GAUTENG PUMP PRICE (SA c/l) AS FROM 07/10/2020	1,486.000	1,466.000	-	-	-
WHOLESALE PRICE (SA c/l) AS FROM 07/10/2020	-	-	1,237.560	1,238.960	640.828
SINGLE NATIONAL MAXIMUM RETAIL PRICE	-	-	-	-	798.000
BASIC FUEL PRICE - 28/10/2020 (SA c/l)	473.536	466.688	460.789	464.731	437.055
PRESS RELEASE CONTRIBUTION TO BFP 07/10/2020 - 28/10/2020 (SA c/l)	533.470	523.470	486.630	488.030	436.128
UNIT OVER/(UNDER) RECOVERY - 28/10/2020 (SA c/l)	59.934	56.782	25.841	23.299	(0.927)
AVERAGE BASIC FUEL PRICE 02/10/2020 - 28/10/2020	513.788	505.839	490.807	493.428	464.091
AVERAGE UNIT OVER/(UNDER) RECOVERY 02/10/2020 - 28/10/2020	24.734	21.263	10.034	9.286	(15.963)

### ANALYSIS MOVEMENT OF AVERAGE OVER/(UNDER) RECOVERY

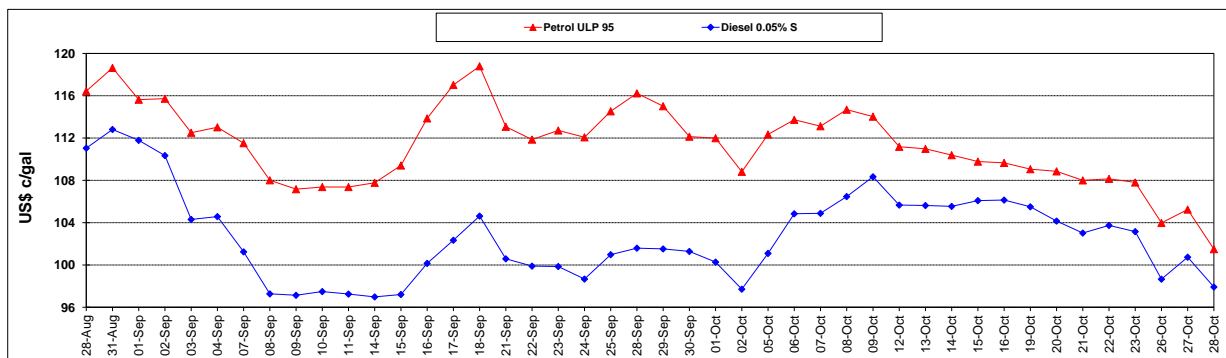
	PETROL 95	PETROL 93	DIESEL 0.05%	DIESEL 0.005%	ILL. PAR.
- MOVEMENT IN INTERNATIONAL PRODUCT PRICES	16.838	13.488	2.490	1.702	(23.096)
- MOVEMENT IN EXCHANGE RATE	7.897	7.775	7.544	7.584	7.133
AVERAGE UNIT OVER/(UNDER) RECOVERY 02/10/2020 - 28/10/2020	24.734	21.263	10.034	9.286	(15.963)

### R/\$ EXCHANGE RATE - (R/\$16.2898 - 28/10/2020)

#### EXCHANGE RATE USED IN BASIC FUEL PRICE



#### INTERNATIONAL PRODUCT PRICES OF BASKET USED IN BASIC FUEL PRICE



#### BASIC FUEL PRICE IN SA CENTS PER LITRE

